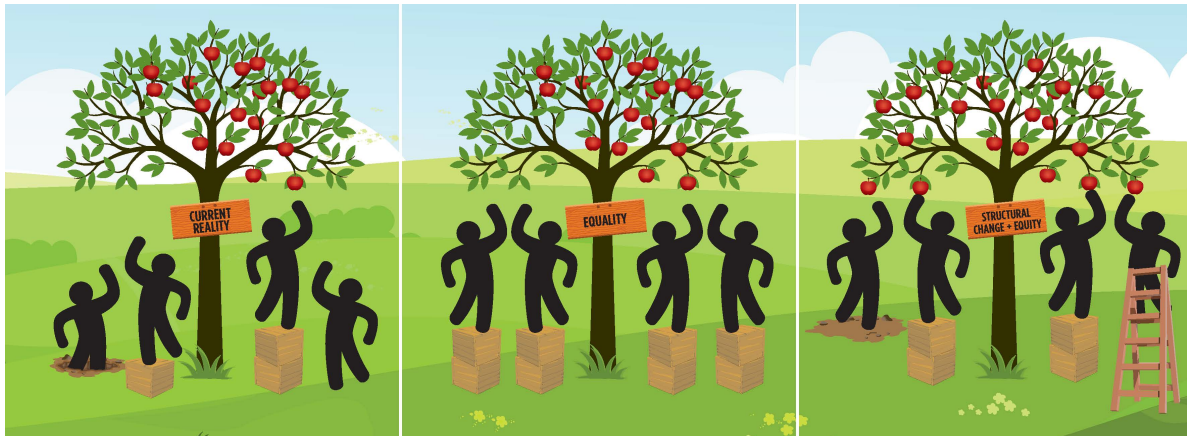


# Key Dimensions of Equity-Oriented Health Care

## 10 Strategies to Guide Organizations in Enhancing Capacity for Equity-Oriented Health Care

Equity-oriented health care (EOHC) is about directing adequate resources to people who are experiencing health and social inequities. It does not mean treating everyone equally, because people need different things.



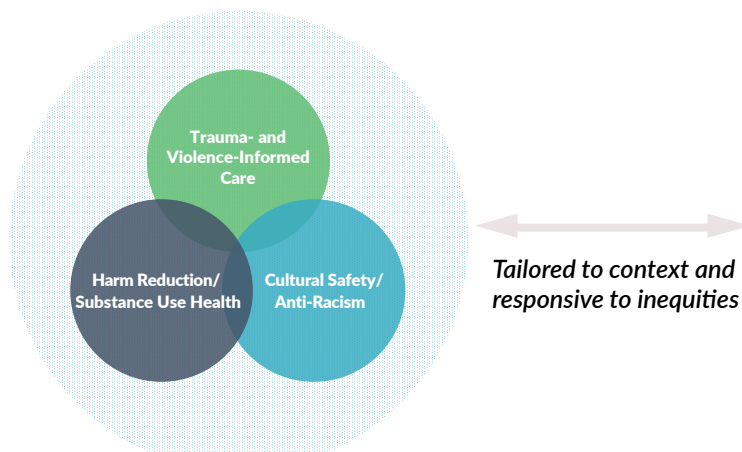
EQUIP's approach to Equity-Oriented Health Care incorporates the **3 Key Dimensions:**

- 1. Trauma- and Violence-Informed Care**
- 2. Cultural Safety/Anti-Racism**
- 3. Harm Reduction/Substance Use Health**

These 3 Key Dimensions are interconnected, responsive to inequities, and tailored to each particular context. **Ten Strategies** flow from these key dimensions to guide organizations in how to enhance their capacity for providing equity-oriented services.

As shown in the Figure below, EQUIP's key dimensions and tailored strategies aim to reduce the effects of structural inequities; the impacts of racism, discrimination and stigma; and the disparities between conventional care approaches and people's needs.

### Key Dimensions of Equity-Oriented Health Care



### 10 Strategies to Guide Organizations in Enhancing Capacity For Equity-Oriented Services

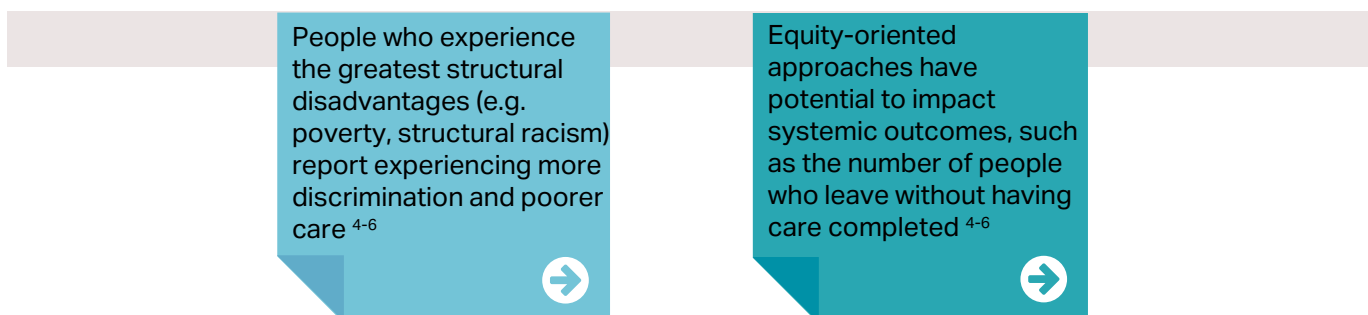
- Explicitly commit to equity
- Develop supportive organizational structures, policies, and processes
- Re-vision the use of time
- Attend to power differentials
- Tailor care, programs and services to local contexts
- Actively counter racism and discrimination
- Actively seek input from community partners and people with living and lived experience
- Tailor care to address inter-related forms of violence
- Enhance access to the social determinants of health
- Optimize use of place and space

# Why is Equity-Oriented Health Care Important?

## Evidence from the EQUIP PHC Study:



## Evidence from the EQUIP EMERGENCY Study:



## References

1. Browne AJ, Varcoe C, Lavoie J, Smye V, Wong ST, Krause M, Tu D, Godwin O, Khan K, Fridkin A. Enhancing health care equity with Indigenous populations: evidence-based strategies from an ethnographic study. *BMC health services research*. 2016 Dec;16:1-7.
2. Ford-Gilboe, MA, Wathen CN, Varcoe C, Herbert C, Jackson BE, Lavoie JG, Pauly B, Perrin NA, Smye V, Wallace B, Wong ST. How equity-oriented health care affects health: key mechanisms and implications for primary health care practice and policy. *The Milbank Quarterly*. 2018 Dec;96(4):635-71.
3. Browne AJ, Varcoe C, Ford-Gilboe M, Nadine Wathen C, Smye V, Jackson BE, Wallace B, Pauly B, Herbert CP, Lavoie JG, Wong ST. Disruption as opportunity: Impacts of an organizational health equity intervention in primary care clinics. *International Journal for Equity in Health*. 2018 Dec;17:1-6.
4. Varcoe C, Bungay V, Browne AJ, Wilson E, Wathen CN, Kolar K, Perrin N, Comber S, Blanchet Garneau A, Byres D, Black A. EQUIP Emergency: study protocol for an organizational intervention to promote equity in health care. *BMC health services research*. 2019 Dec;19:1-4.
5. Varcoe C, Browne AJ, Bungay V, Perrin N, Wilson E, Wathen CN, Byres D, Roberta Price E. Through an equity lens: illuminating the relationships among social inequities, stigma and discrimination, and patient experiences of emergency health care. *International Journal of Health Services*. 2022 Apr;52(2):246-60.
6. Varcoe C, Browne AJ, Perrin N, Wilson E, Bungay V, Byres D, Wathen N, Stones C, Liao C, Price ER. EQUIP emergency: can interventions to reduce racism, discrimination and stigma in EDs improve outcomes?. *BMC health services research*. 2022 Dec;22(1):1-4.

## How to cite this document

EQUIP Health Care. (2023). Key Dimensions of Equity-Oriented Health Care 10 Strategies to Guide Organizations in Enhancing Capacity for Equity-Oriented Health Care. Retrieved from [www.equiphealthcare.ca](http://www.equiphealthcare.ca)

Learn more about how to implement equity-oriented health care by using the strategies and tools in the [EQUIP Equity Action Kit](#)

**Substance use health** parallels physical and mental health and encompasses harm reduction in promoting health for all regardless of their substance use. To learn more, see the Community Addictions Peer Support Association's "Understanding Substance Use Health" and the "EQUIP Equity Essentials".